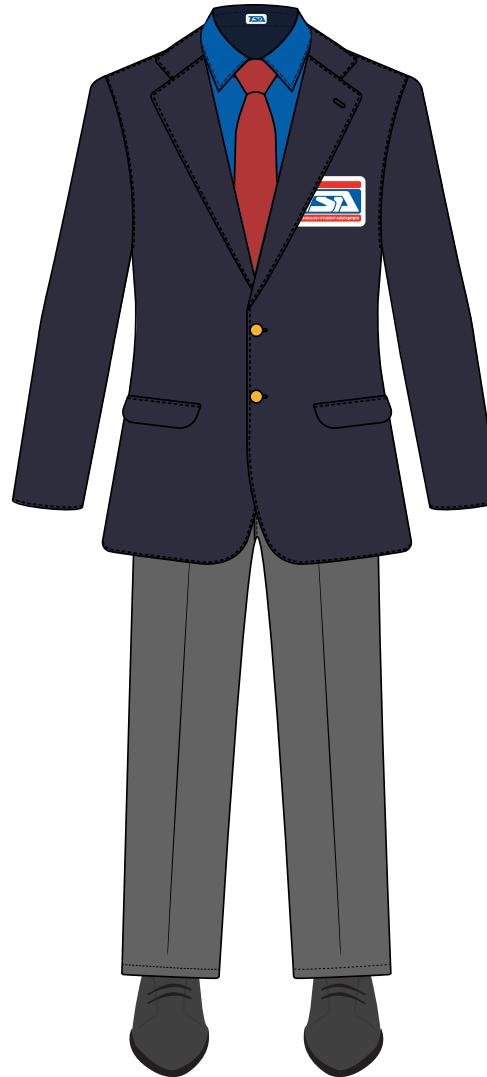
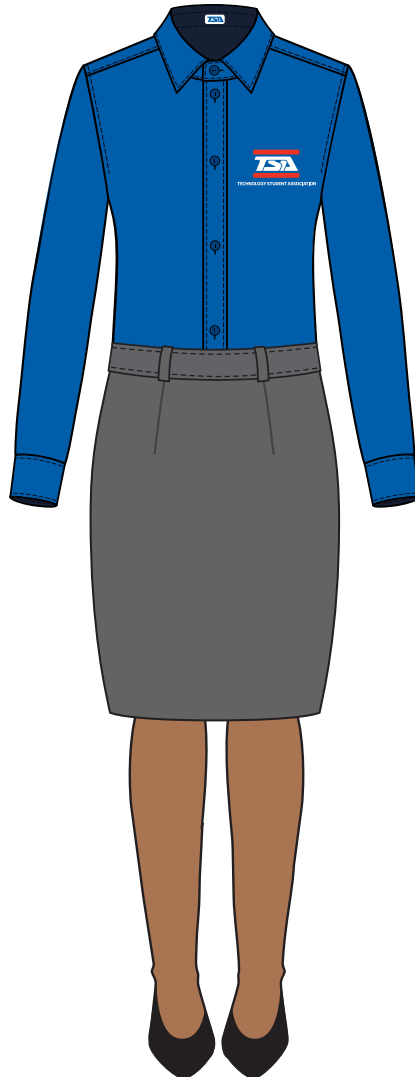
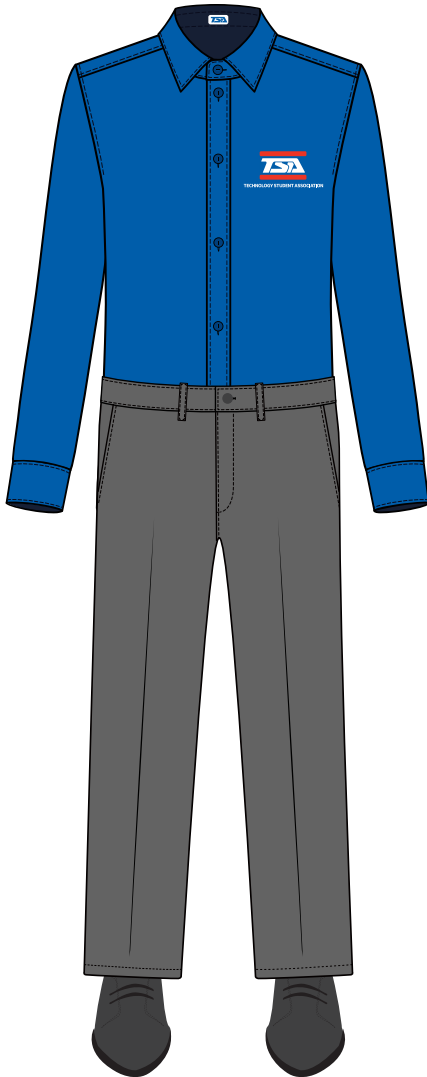




NATIONAL TSA CONFERENCE COMPETITION ATTIRE



COMPETITION ATTIRE

Shirt: official royal blue TSA shirt

Pants, or at least knee-length Skirt: gray

- *Unacceptable:* jeans; jeggings; leggings; baggy pants; exterior pocket pants; shorts

Shoes: black dress shoes worn with black or dark blue socks, hosiery (optional):

- open-toed shoes or sandals are acceptable
- *Unacceptable:* athletic shoes; flip-flops; military boots; or work boots

Required additional attire for Middle and High School Chapter Team event

Blazer: navy blue with official TSA patch

Tie: official TSA tie (males)

- Females are not penalized for wearing the official TSA tie to Chapter Team or any other competitive event

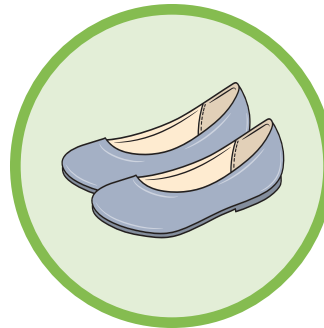
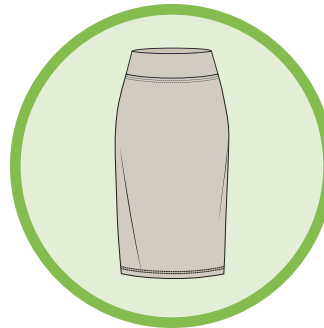
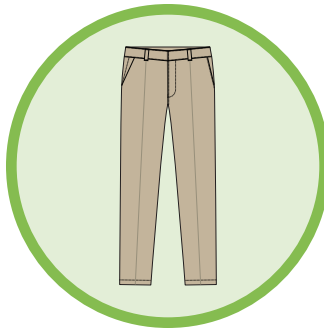
Above attire may be worn for other competitions if preferred by event participants.



NATIONAL TSA CONFERENCE

GENERAL SESSION ATTIRE

EXAMPLES



GENERAL SESSION ATTIRE

(Includes voting delegate attire at the business meeting)

Shirt: the official TSA shirt (royal blue) is preferred; button-down shirt or a polo/ golf shirt

- *Unacceptable:* t-shirts; halter tops; tank tops

Pants, or at least knee-length Dress or Skirt

- *Unacceptable:* jeans; jeggings; leggings; baggy pants; exterior pocket pants; shorts

Optional Blazer: navy blue with official TSA patch

Optional Tie: official TSA tie

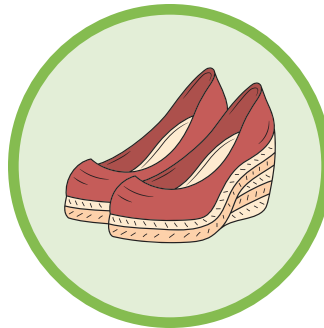
Shoes: dress shoes worn with dark socks, hosiery (optional):

- open-toed shoes or sandals are acceptable
- *Unacceptable:* athletic shoes; flip-flops; military boots; or work boots



NATIONAL TSA CONFERENCE CASUAL ATTIRE

EXAMPLES



CASUAL ATTIRE

Appropriate t-shirts, shorts, or jeans.

Casual attire **may not** be worn at competitions or general sessions.